



# Studio Clock

Version a3, build #4, 2023-05-08



Studio Clock lets you see actual time even when you're working on a large Voltage Preset.

It contains four skins with analog dial clocks and one digital clock with calendar displays.

## Skin Selection



When mouse pointer is on P.moon logo, a red frame appears around the logo. That is a hint that here is a functional area.



A right click on the logo lets popup a menu. With this menu you can select a module skin by clicking on a menu item with left mouse button.

These skins are available:



“Metallic”



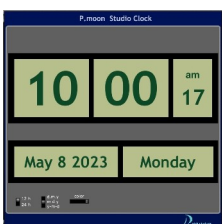
“Antique”



“Enamel”



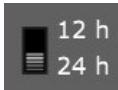
“Technical”



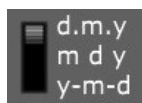
“Digital”

## Digital Clock

**P.moon Studio Clock** gets its values from your computer system automatically. So time zone and daylight saving time (“summertime”) are set as you did in your computer.



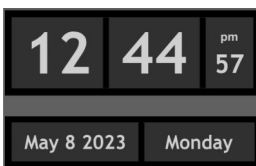
time format selection  
- “**12 h**”: 0 ... 12 h am/pm  
- “**24 h**”: 0 ... 23 h



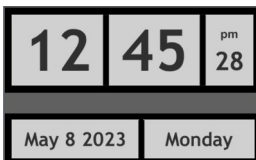
date format selection:  
- day. month. year  
- month day year  
- year – month – day



display color selection:



- “dark”



- “light”



- “Nixie style”



- “VFD style”



- “LCD style”

You can find further information on P.moon’s modules on our home page: