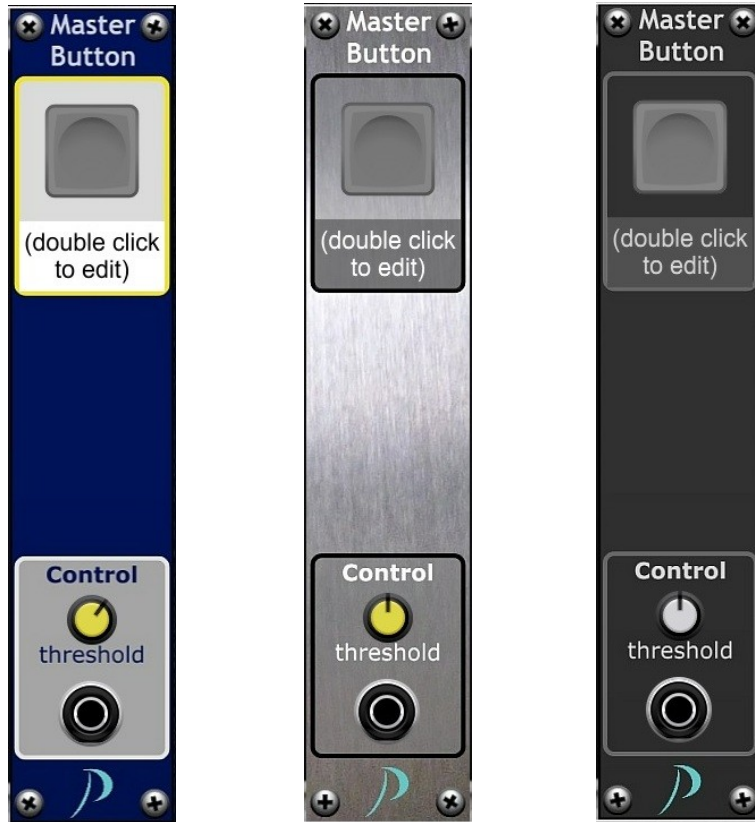


Master Button

Version 2, build #2, 2023-05-16



PM Master Button does not process or output any signal, because it is destined for only use with *Adroit Synthesis'* **Tandem** module.

That **Tandem** module can link one control (knob, slider or button) to another, even bidirectionally. Even different types can be paired.

As master control **PM Master Button** has to be linked to at least one **Tandem** module. By clicking on the Master Button, coupled controls will change their states according preset voltage ranges that on **PM Master Button** and on **Tandem**. Advantage of PM Master Button is, that it can also be operated by a control voltage. This way slave controls can be operated electrically, that do not provide any CV input.

This module comes with three select-able skins. A skin change forces skin change of all other P.moon Master Control modules on your computer.



The only job of the Master Button is to serve as link-able object for *Adroit Synthesis'* **Tandem** module.

Master label is editable. After a double click on it, you can enter a label text.



Without any input cable, threshold preset value does not effect Master Button function. When a cable is connected, the Master Button gets disabled for manual operation.

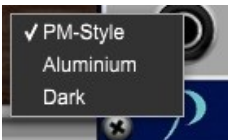
(Unfortunately actually disabled button stays gray even when it is on. CA will fix that issue with a sooner *Voltage* update.)

With the knob on the control area you can set a threshold value from -10 to +10 volts. An input voltage greater than that threshold sets the Master Button on. A voltage less than or equal the threshold sets the button off.

A double click on the knob sets it to default 2.5 volts.



When the mouse cursor moves on the area of the P.moon logo, a red frame appears.



A right click on the logo opens the skin menu. The actual skin name is marked with a hook. If you click on another skin name with left mouse button, that skin will be loaded for this module and for all other Master Control modules on your computer. A left click to anywhere else closes the menu without changing the skin.