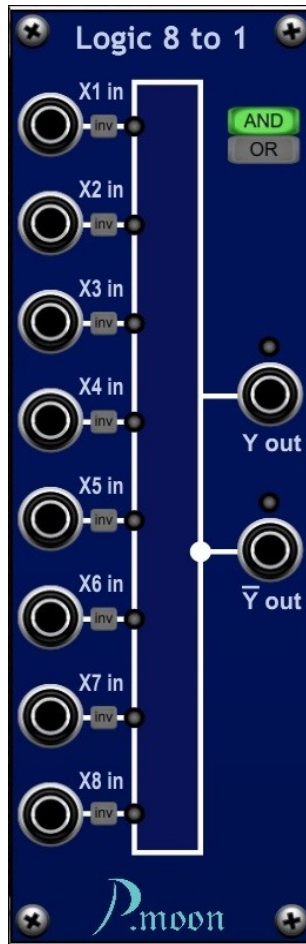


Logic 8 to 1

Version 2022-03-03



This module works as boolean logic element. It can build an AND or OR result from eight input signals. Every input can be inverted by a toggle button, before signal is displayed and processed.



Any CV voltage. Values over 2.5 volts are seen as ON.



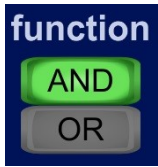
If this toggle button is ON, the input signal will be inverted, before it is indicated and processed.



Logical result. (0 or +5 volt)



Inverted logical result. (+5 or 0 volt)



Radio buttons for *function*

Selects AND operation mode.

Selects OR operation mode.